

What is JICHIRO?



Founded in 1954

Membership 743,629 members in 2,595 unions

(As of Aug. 2022)

* Organizing workers in local governments at prefectural and municipal levels, and in private companies providing public services in communities

JICHIRO's Major Objectives

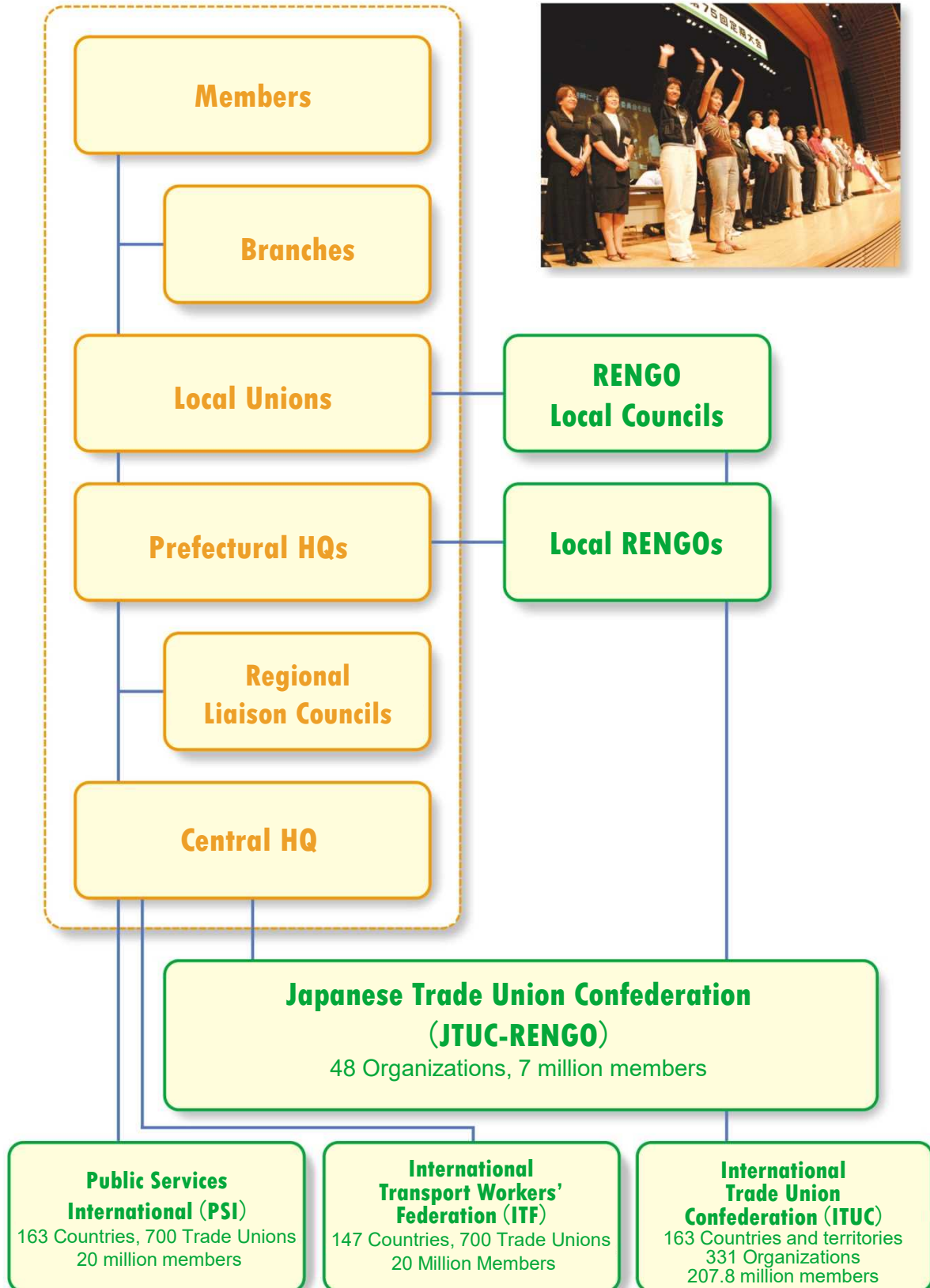
- ① To improve the living standards of members; to protect and demand worker's rights
- ② To enhance the quality and value of social services that underpin the quality of life of people through promoting decentralization and local autonomy
- ③ To establish social justice, peace and human rights. To lobby political parties
- ④ To offer voluntary welfare programs for members and their families to build "security, stability and trust"



JICHIRO's Organizational Structure

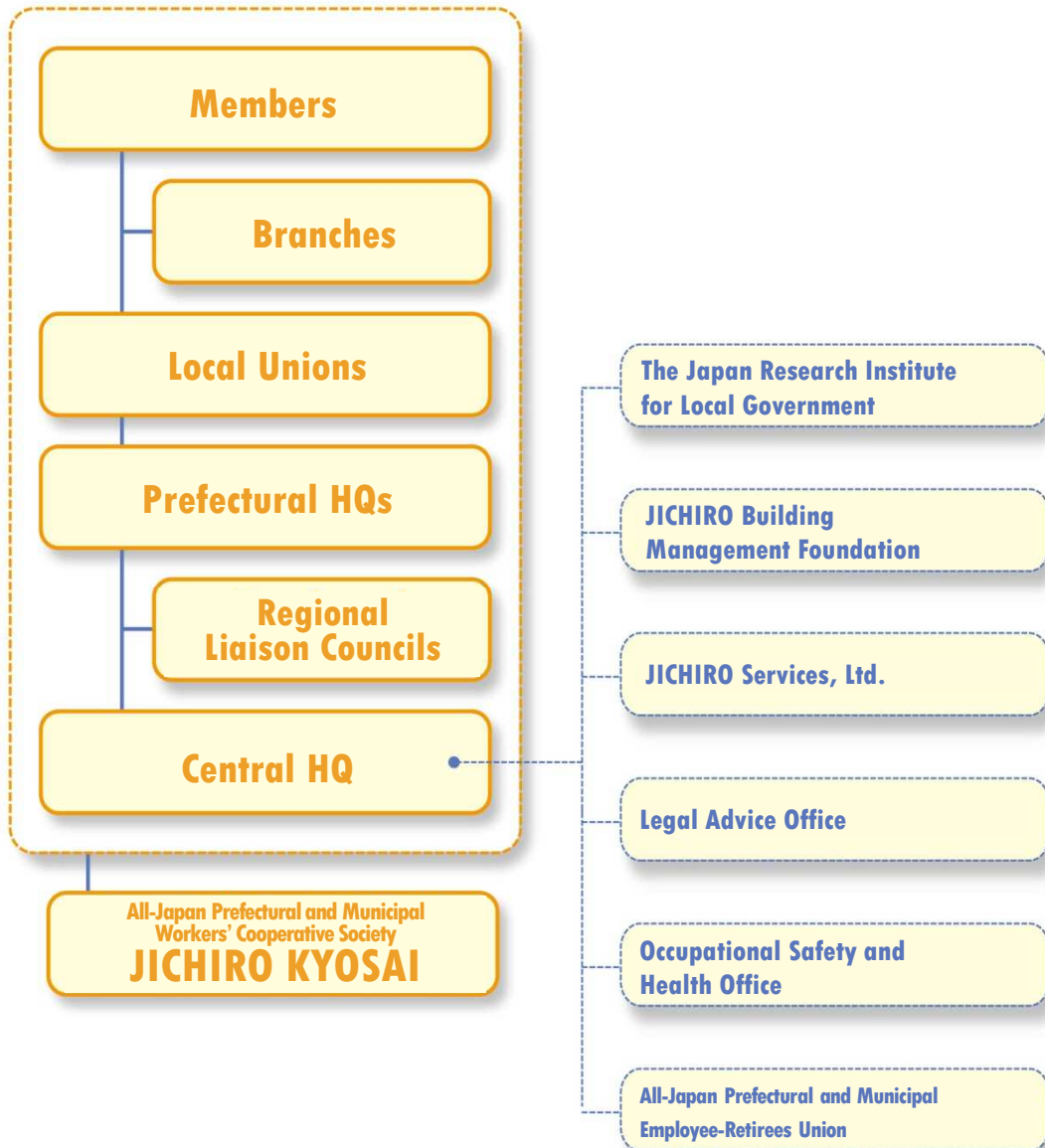


①



JICHIRO's Organizational Structure

②



Central Headquarters and its Function

The President, the 2 Vice Presidents, the General Secretary, the Deputy General Secretary and 23 members of the Central Executive Board Meeting hold office at the Central Headquarters.

● Department of Planning and General Affairs

Planning Division, Public Relations Division, International Division, General Affairs Division

● Department of Labor Affairs

Working Conditions, Basic Labor Rights, Health and Safety

● Department of Organizational Management

Organizational Management, Member Education, Gender Equality, Organizing workers who are employed by private providers but work in local public service

● Department of Policy and Political Affairs

Local Government, Administration and Public Finance, Peace • Human Rights • Environment, Social Security Policy

● Finance Department

Occupational-Based Councils



Manual Workers Council

Municipal Garbage Disposal Workers, School Meals Preparation Staff, School Administration Staff



Health and Medical Workers Council

Nurses, Hospital Medical Staff, Health Center Workers



Public Utility Workers Council

Water, Sewerage, Gas and Electric Power



Social Welfare Workers Council

Child Care Center Staff, Social Welfare Institutions, Caseworkers, Home Helpers



Council for Social Insurance and Public Placement Agencies Employees

Workers Engaged in Pensions and Health Insurance Work



Town and Village Workers Council

Town and Village Workers



Youth Division

Youth Union Members



Women's Division

Women Union Members





Trade Union Council of National Health Insurance Organizations



Council of Labor Unions for Private Corporations in Public Services
Public Service Workers in Private Corporations



All Japan Racing Place Workers' Council
Workers in horse races, cycle races, motorboat races and auto races managed by local authorities



JICHIRO Council of General Workers
Workers in small to medium size companies with a diverse employment base and in a wide variety of public service fields



Municipal Transport Workers Council
Workers in urban public transport services such as subway and buses



National Association of Temporary and Non-regular Workers
Temporary, Non-regular and Part-time Workers



National Council of Firefighters and Ambulance Workers (ZENSHOUKYO)
(Independent Association)



Organizational Management



National Congress

The supreme decision-making body, held annually to discuss action policies and budgets, and elect the Central Executive Board members

Central Committee Meeting

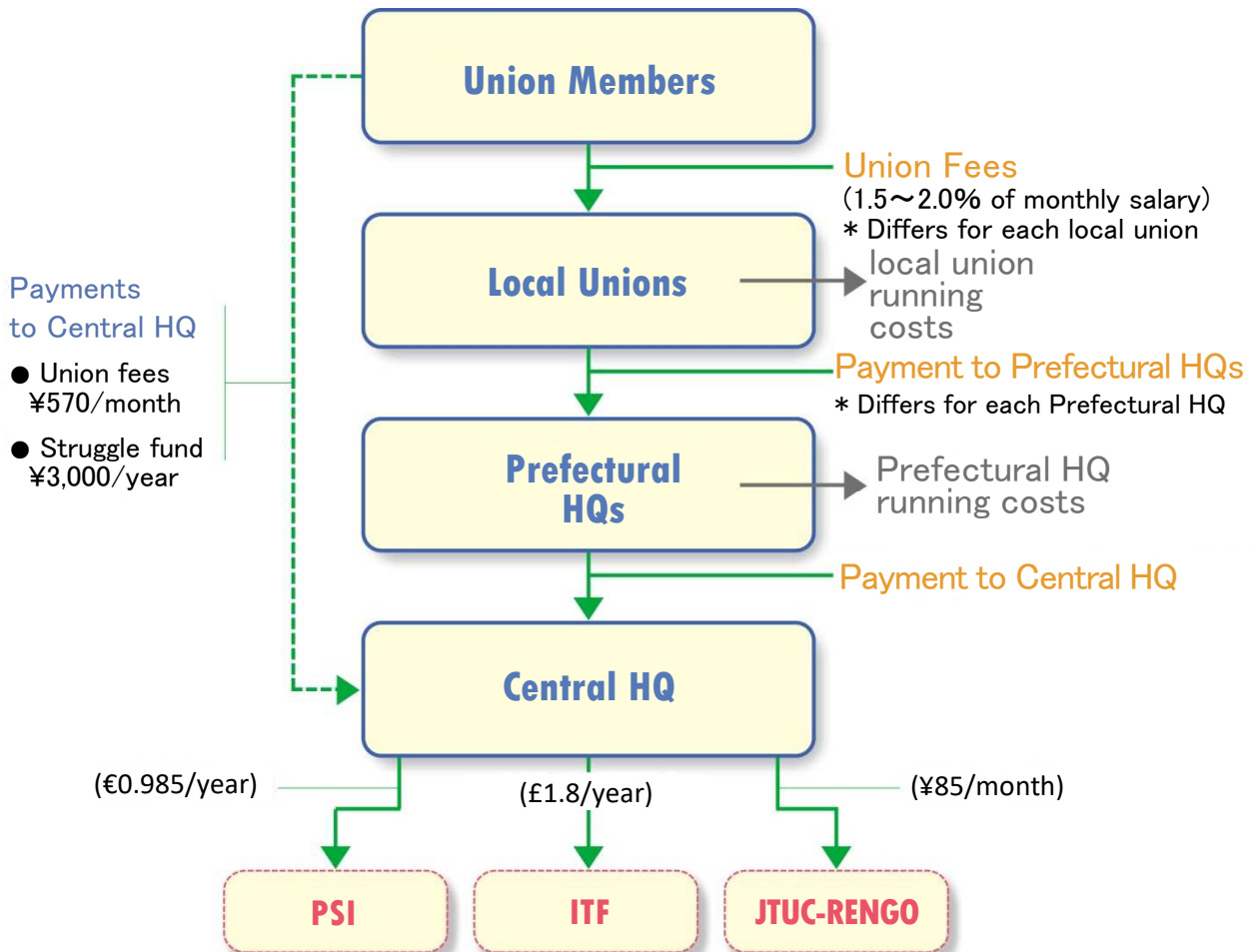
The second most important meeting, held twice a year

Central Executive Board Meeting

The governing body, making decisions on daily business and JICHIRO's trade union campaigns



Union Fees



JICHIRO's Services to Members



JICHIRO established the All Japan Prefectural and Municipal Worker's Cooperative Society (JICHIRO KYOSAI) in 1966. JICHIRO KYOSAI has created various types of mutual aid programs, as shown below.



**Mutual Aid
Benefit
Scheme**



**Automobile
Insurance**



**Group Term
Life
Insurance**



**Fire
Insurance**



Annuity



**Education
Fund
Insurance**

