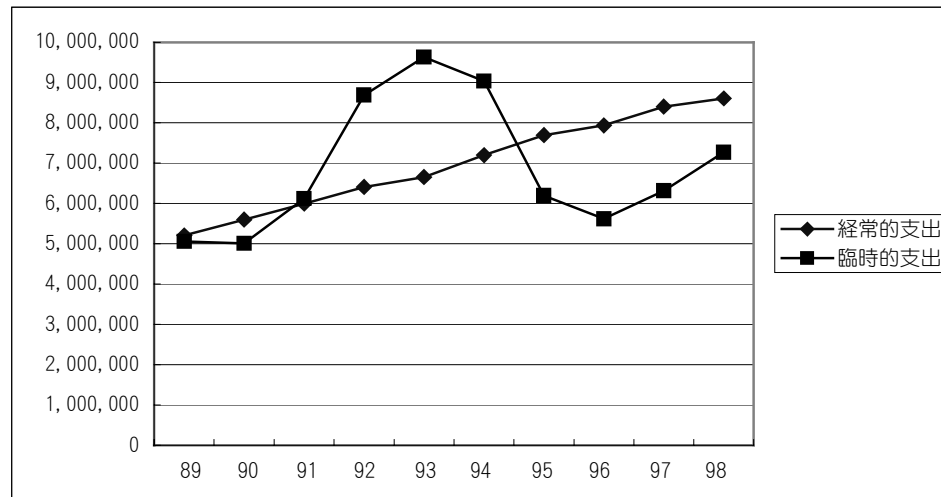
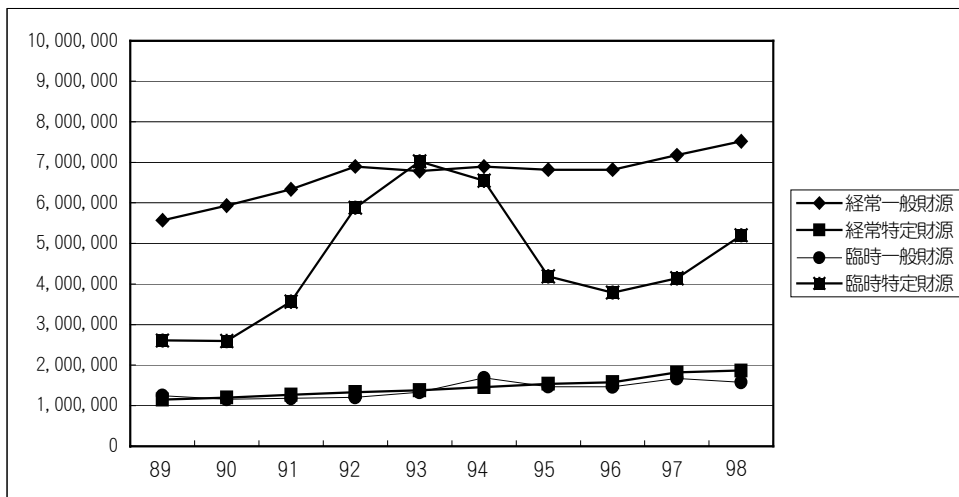


◎財源別にみる過去10年間

資料-1  
(単位：千円)

財源別	1989	1990	1991	1992	1993	1994	1995	1996	1997	1998
経常一般財源	5,574,886	5,932,686	6,337,605	6,897,977	6,781,034	6,897,338	6,820,285	6,822,449	7,176,329	7,521,903
経常特定財源	1,151,438	1,200,754	1,266,569	1,336,752	1,381,408	1,459,077	1,541,535	1,575,230	1,820,898	1,864,166
臨時一般財源	1,247,043	1,156,509	1,183,923	1,209,658	1,331,824	1,683,652	1,467,948	1,466,396	1,670,675	1,575,995
臨時特定財源	2,606,061	2,596,233	3,564,030	5,881,415	7,024,476	6,547,777	4,190,924	3,790,353	4,140,297	5,203,890
歳入合計	10,579,428	10,886,182	12,352,127	15,325,802	16,518,742	16,587,844	14,020,692	13,652,428	14,808,199	16,165,954
一般財源計	6,821,929	7,089,195	7,521,528	8,107,635	8,112,858	8,580,990	8,288,233	8,288,845	8,847,004	9,097,898
特定財源計	3,757,499	3,796,987	4,830,599	7,218,167	8,405,884	8,006,854	5,732,459	5,365,583	5,961,195	7,068,056
経常財源計	6,726,324	7,133,440	7,604,174	8,234,729	8,162,442	8,356,415	8,361,820	8,397,679	8,997,227	9,386,069
臨時財源計	3,853,104	3,752,742	4,747,953	7,091,073	8,356,300	8,231,429	5,658,872	5,256,749	5,810,972	6,779,885

経常的支出	5,207,632	5,598,767	5,996,706	6,411,181	6,657,868	7,198,835	7,697,985	7,940,381	8,405,085	8,605,817
臨時的支出	5,058,110	5,012,922	6,123,940	8,689,636	9,632,015	9,034,251	6,195,897	5,620,669	6,316,688	7,268,817
歳出合計	10,265,742	10,611,689	12,120,646	15,100,817	16,289,883	16,233,086	13,893,882	13,561,050	14,721,773	15,874,634

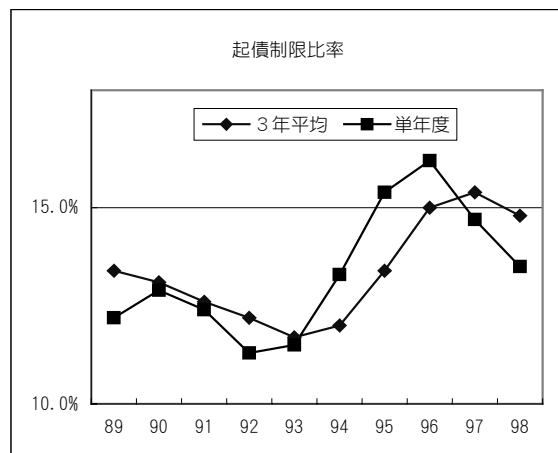
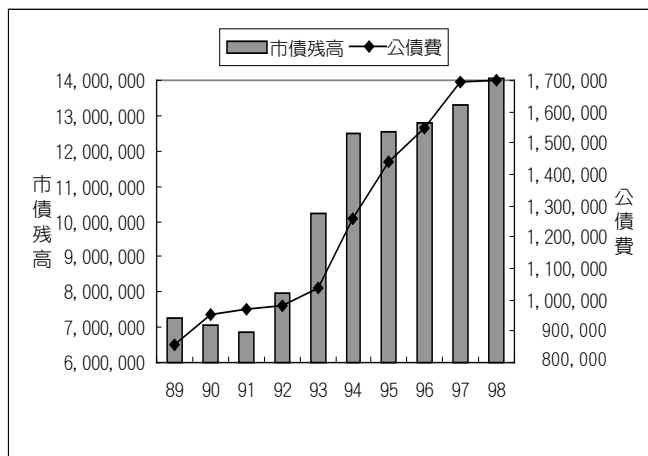
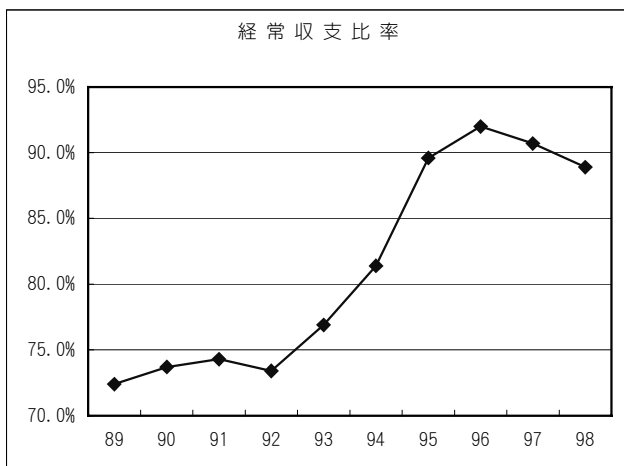


◎財政指標でみる過去10年間

資料-2  
(単位：千円)

	1989	1990	1991	1992	1993	1994	1995	1996	1997	1998
経常収支比率	72.4%	73.7%	74.3%	73.4%	76.9%	81.4%	89.6%	92.0%	90.7%	88.9%
起債制限比率	13.4%	13.1%	12.6%	12.2%	11.7%	12.0%	13.4%	15.0%	15.4%	14.8%
〃(単年度)	12.2%	12.9%	12.4%	11.3%	11.5%	13.3%	15.4%	16.2%	14.7%	13.5%
公債費負担比率	12.0%	13.0%	12.4%	11.6%	12.1%	13.7%	16.8%	17.7%	18.2%	17.8%
標準財政規模	5,376,437	5,623,164	5,980,807	6,672,027	6,618,126	6,891,785	6,939,850	7,064,583	7,327,851	7,634,607
財政力指数	0.623	0.601	0.571	0.560	0.565	0.569	0.586	0.592	0.593	0.578
市債残高	7,268,814	7,058,973	6,871,375	7,980,689	10,223,114	12,508,958	12,525,650	12,783,731	13,297,764	14,043,657
基金残高	1,334,739	2,060,337	3,005,803	3,335,933	2,640,218	1,818,570	1,478,631	1,273,594	1,171,544	1,535,838
投資	1,935,196	1,432,260	1,927,406	4,481,331	5,934,894	4,866,405	2,355,231	1,535,298	2,009,553	3,773,445
市債借入額	560,124	244,431	298,680	1,618,280	2,766,680	2,949,480	1,525,280	1,182,880	1,620,580	1,898,180
公債費	855,702	955,157	967,996	979,458	1,036,639	1,257,808	1,439,116	1,545,053	1,692,336	1,698,319
政府資金利率	6.20%	6.60%	5.50%	4.40%	4.30%	3.85%	3.40%	2.60%	2.00%	1.70%

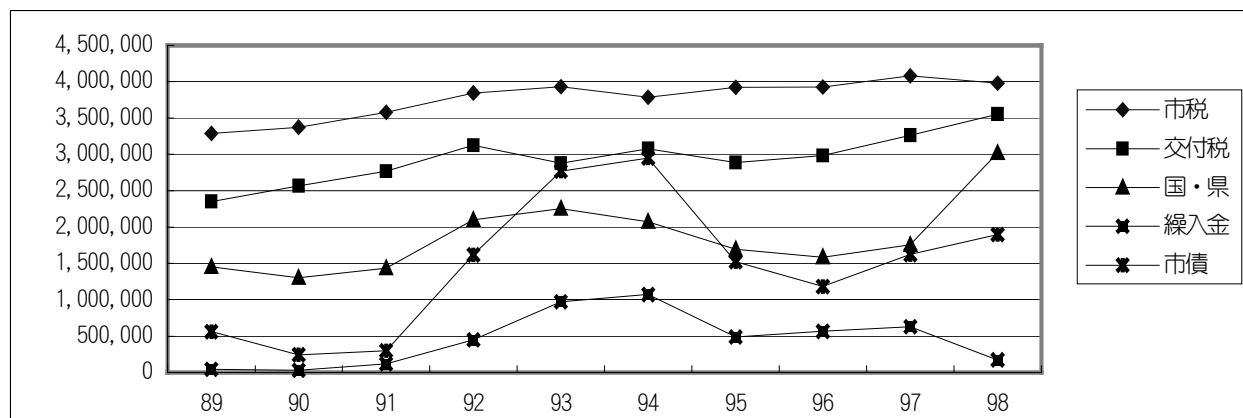
歳入総額	10,579,428	10,886,182	12,352,127	15,325,802	16,518,742	16,587,844	14,020,692	13,654,428	14,808,199	16,165,954
歳出総額	10,265,742	10,611,689	12,120,646	15,100,817	16,289,883	16,233,086	13,893,882	13,561,050	14,721,773	15,874,634
形式収支	313,686	274,493	231,481	224,985	228,859	354,758	126,810	93,378	86,426	291,320
繰越財源	0	0	33,000	33,895	69,508	177,668	39,607	45,796	11,191	217,263
実質収支	313,686	274,493	198,481	191,090	159,351	177,090	87,203	47,582	75,235	74,057
実質収支比率	5.8%	4.9%	3.3%	2.9%	2.4%	2.6%	1.3%	0.7%	1.0%	1.0%



◎歳入の推移

資料-3  
(単位：千円)

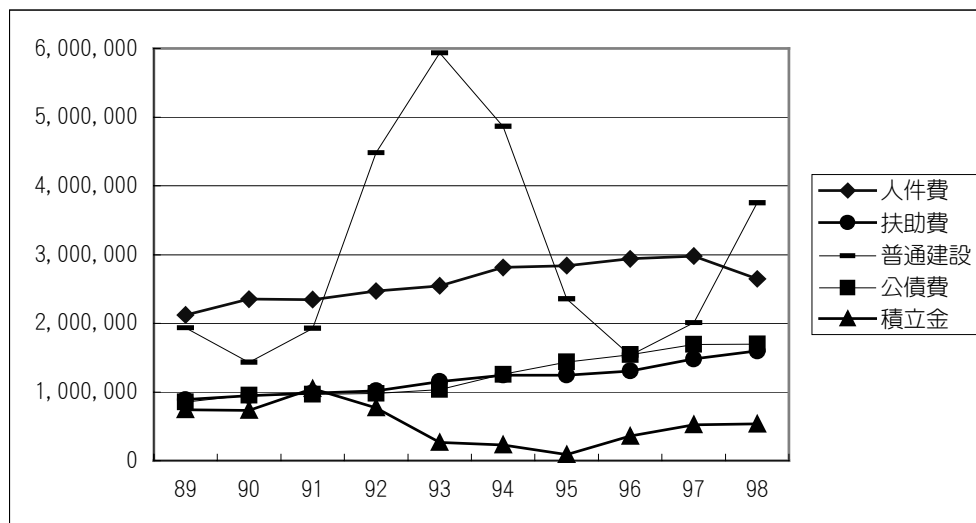
科目	1989	1990	1991	1992	1993	1994	1995	1996	1997	1998	98-97
1 地方税	3,287,557	3,372,551	3,577,568	3,843,967	3,930,858	3,785,069	3,922,060	3,925,172	4,080,746	3,976,794	-103,952
2 地方譲与税	231,924	259,091	270,898	291,382	318,066	324,361	329,237	333,231	210,695	138,429	-72,266
3 利子割交付金	71,227	153,175	157,072	101,749	118,413	164,908	113,946	65,289	52,390	40,190	-12,200
4 地方消費税交付金									90,558	398,762	308,204
6 特別地方消費税交付金			1,585	3,336	3,441	2,585	1,614	1,251	2,039	2,244	205
7 自動車取得税交付金	86,863	87,962	90,266	85,387	83,199	92,120	96,164	100,132	85,463	72,904	-12,559
9 地方交付税	2,352,003	2,569,449	2,770,032	3,125,362	2,880,037	3,076,868	2,886,403	2,982,409	3,262,912	3,554,433	291,521
10 交通安全交付金	6,547	6,952	8,456	8,116	8,135	8,080	7,886	7,971	7,742	7,750	8
11 分担金及び負担金	73,143	70,897	78,590	86,506	121,404	112,483	129,230	129,345	177,972	184,183	6,211
12 使用料	267,375	274,232	267,493	286,774	295,271	318,178	327,505	339,148	352,466	338,275	-14,191
13 手数料	31,046	31,317	32,030	32,094	33,421	33,451	34,652	38,186	44,669	46,976	2,307
14 国庫支出金	1,223,485	968,329	1,148,028	1,589,112	1,806,605	1,570,990	1,320,486	1,062,053	1,309,497	2,528,804	1,219,307
15 国有提供施設等所在	84,226	85,732	85,732	88,321	87,438	87,438	102,949	110,408	110,408	108,404	-2,004
16 県支出金	229,447	333,577	284,720	511,243	448,054	502,934	372,492	524,712	446,291	492,090	45,799
17 財産収入	200,174	111,376	308,207	230,323	186,997	127,931	46,623	410,206	359,881	486,432	126,551
18 寄付金	4,545	97,000	517,693	511,578	4,918	18,104	2,633	4,742	168,412	1,928	-166,484
19 繰入金	42,054	31,103	118,318	447,156	974,237	1,073,161	487,447	565,776	628,509	174,202	-454,307
20 繰越金	318,828	313,686	274,493	231,481	224,985	228,859	354,758	126,810	93,378	86,426	-6,952
21 諸収入	1,508,860	1,875,322	2,062,266	2,233,635	2,226,683	2,110,844	1,959,327	1,744,707	1,703,591	1,628,548	-75,043
22 市債	560,124	244,431	298,680	1,618,280	2,766,680	2,949,480	1,525,280	1,182,880	1,620,580	1,898,180	277,600
合計	10,579,428	10,886,182	12,352,127	15,325,802	16,518,842	16,587,844	14,020,692	13,654,428	14,808,199	16,165,954	1,357,755



◎歳出の推移

資料-4  
(単位：千円)

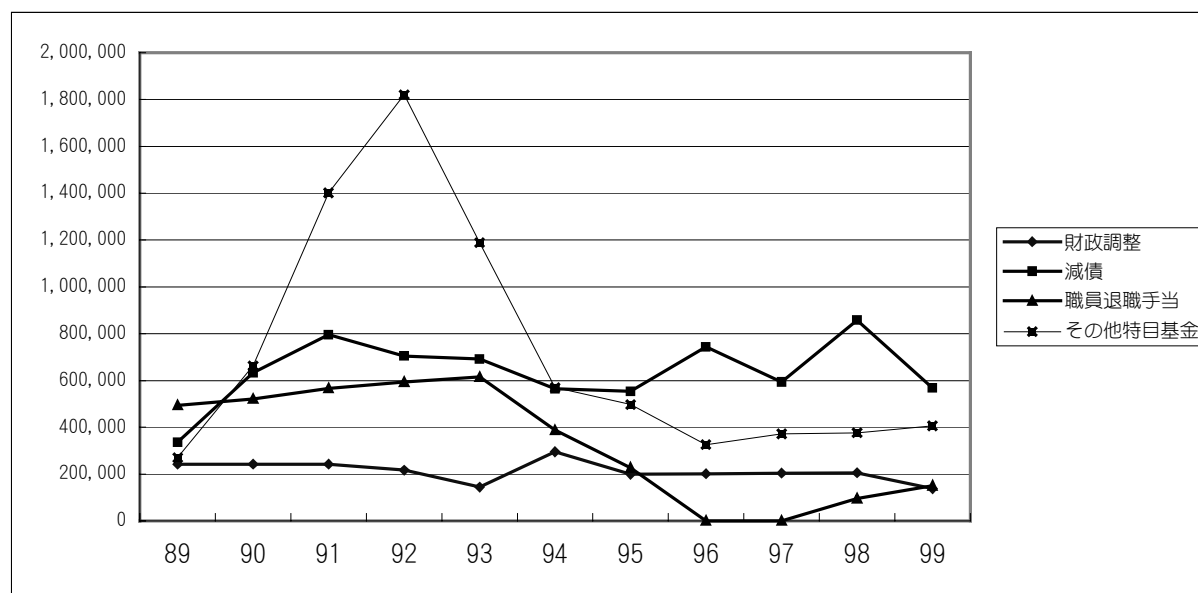
科目	1989	1990	1991	1992	1993	1994	1995	1996	1997	1998	98-97
1 人件費	2,120,521	2,354,120	2,346,015	2,470,151	2,545,683	2,813,832	2,839,065	2,938,771	2,978,921	2,647,552	-331,369
2 物件費	962,758	1,055,353	1,184,836	1,289,215	1,345,691	1,451,619	1,571,006	1,774,234	1,934,061	1,689,667	-244,394
3 維持補修費	106,780	110,579	106,204	121,469	101,317	106,099	98,823	98,766	96,140	95,441	-699
4 扶助費	889,179	946,838	985,350	1,018,199	1,154,853	1,247,217	1,247,492	1,306,627	1,479,637	1,597,658	118,021
5 補助費等	650,420	750,800	719,872	874,297	891,819	1,258,707	1,180,644	1,465,713	1,599,173	1,415,757	-183,416
6 普通建設	1,935,196	1,432,260	1,927,406	4,481,331	5,934,894	4,866,405	2,355,231	1,535,298	2,009,553	3,754,839	1,745,286
7 災害復旧			88,466					100	12,025		-12,025
8 失業対策	32,783	18,882	12,165								0-
9 公債費	855,702	955,157	967,996	979,458	1,036,639	1,257,808	1,439,116	1,545,053	1,692,336	1,698,319	5,983
10 積立金	742,408	733,823	1,050,281	769,588	266,464	233,013	90,030	358,098	523,946	536,618	12,672
11 投資出資金	2,220	11,500	2,200	10,409	13,769	2,660	189,449	84,326	9,105	4,947	-4,158
12 貸付金	1,422,406	1,762,541	1,926,642	2,104,051	2,041,028	2,175,581	2,001,796	1,621,568	1,522,246	1,462,081	-60,165
13 繰出金	545,369	479,836	803,213	982,649	957,726	820,145	881,230	832,496	864,830	971,755	107,125
歳出合計	10,265,742	10,611,689	12,120,646	15,100,817	16,289,883	16,233,086	13,893,882	13,561,050	14,721,773	15,874,634	1,152,861



◎基金の推移

資料-5  
(単位：千円)

区 分	1989年度 末現在高	1990年度 末現在高	1991年度 末現在高	1992年度 末現在高	1993年度 末現在高	1994年度 末現在高	1995年度 末現在高	1996年度 末現在高	1997年度 末現在高	1998年度 末現在高	1999年度 末 見 込
財 政 調 整	242,887	242,883	242,883	217,318	145,002	295,802	200,217	202,220	204,236	206,272	137,676
減 債	336,436	633,191	795,599	704,773	691,446	564,848	553,286	743,617	593,534	857,385	568,476
職員退職手当	494,434	521,645	566,197	593,938	614,606	388,244	227,422	1,201	1,202	95,912	150,914
その他特目基金	270,982	662,618	1,401,124	1,819,904	1,188,364	569,676	497,706	326,556	372,572	376,269	405,911
計	1,344,739	2,060,337	3,005,803	3,335,933	2,640,218	1,818,570	1,478,631	1,273,594	1,171,544	1,535,838	1,262,977



◎市債の推移

資料-6  
(単位：千円)

区分	1989	1990	1991	1992	1993	1994	1995	1996	1997	1998
元 金	412,914	454,272	486,278	508,966	511,686	625,185	811,488	924,799	1,106,547	1,152,287
利 子	421,946	449,930	435,885	419,679	451,392	526,095	587,893	588,357	560,722	519,790
計	834,860	904,202	922,163	928,645	963,078	1,151,280	1,399,381	1,513,156	1,667,269	1,672,077
借入額	560,124	244,431	298,680	1,618,280	2,766,680	2,949,480	1,525,280	1,182,880	1,620,580	1,898,180
残 高	7,268,814	7,058,973	6,871,375	7,980,689	10,223,114	12,508,958	12,525,650	12,783,731	13,297,764	14,043,657

